

MAURICE VY | QTAKE VIDEO-ASSIST OPERATOR

+61 422 012 183 • mauvy@mac.com • [IMDb](#) • [Freelancers Promotions](#)

SELECT FEATURE/TELEVISION EXPERIENCE

War Machine | 2024

	Lionsgate	US Feature	Alexa 35
Director	Patrick Hughes	Director of Photography	Aaron Morton
Producer	Todd Lieberman	Script Supervisor	Ted Green
	Alex Young		
EP	Valerie Bleth Sharp		
	Greg McLean		
Line Producer	Naomi Cleaver		



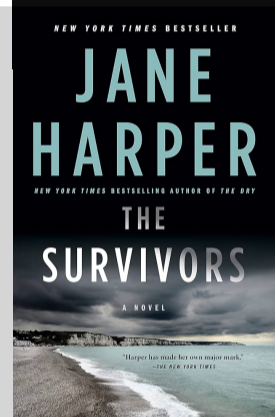
Beneath the Storm (The Rising) | 2024

	Sony Pictures Entertainment	US Feature	Alexa 35
Director	Tommy Wirkola	Director of Photography	Matt Weston FNF
Producer	Kevin Messick	Script Supervisor	Guy Strachan
	Adam McKay		
UPM	Anna Steel		



The Survivors | 2024

	Netflix Originals	Mini Series	Arri Alexa 35
Director	Cherie Nowlan	Tony Ayres Productions	
	Ben C Lucas	Director of Photography	Mark Wareham ACS
Line Producer	Ross Allsop		Dan Freene ACS
		Script Supervisor	Samantha Page
			Mim Green



RICKY STANICKY | 2023

	Amazon Studios	US Feature	Arri Alexa 35
Director	Peter Farrelly	Cosmos Pictures	
Producer	Paul Currie	Director of Photography	John Brawley ACS
Line Producer	Georgie Marquis	Script Supervisor	Amy Barclay



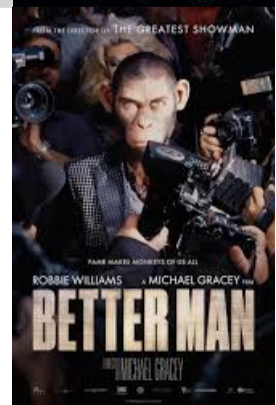
LA BREA SEASON 2 | 2023

	NBC/Universal Television	US TV Series	Sony Venice
Director	Adam Davidson	Director of Photography	Mark Wareham ACS
	Greg McLean		Dan Maxwell ACS
	Tara Miele		Earl Dresner ACS
	Cherie Nowlan	Script Supervisor	Jane Forbes
	Rose Troche		Ted Green
UPM	Peter Muston		



BETTER MAN | 2023

	Better Man Productions P/L	Feature	Arri Alexa Mini LF
Director	Michael Gracey	Director of Photography	Erik Wilson BSC
Producer	Paul Currie	Script Supervisor	Merran Elliot
Line Producer	Georgie Marquis		Red Komodo



MAURICE VY | QTAKE VIDEO-ASSIST OPERATOR

+61 422 012 183 • mauvy@mac.com • [IMDb](#) • [Freelancers Promotions](#)

WOODY WOODPECKER GOES TO CAMP | 2021

Director Jonathan A. Rosenbaum
 Producer Jon Kuyper
 Line Producer Janine van Assen

Universal 1440 Entertainment US Feature Sony Venice
 Director of Photography Ross Emery
 Script Supervisor Merran Elliot



LA BREA SEASON 1 | 2021

Director Adam Davidson
 Thor Freudenthal
 Cherie Nowlan
 Greg McLean
 UPM Peter Muston

NBC/Universal Television US TV Series Sony Venice
 Director of Photography Mark Wareham ACS
 Damian Wyvill ACS
 Script Supervisor Amy Barclay
 Paul Kiely



COMMERCIAL & ADVERTISING CLIENTS



HARDWARE & SOFTWARE

- Cameras: Arri Alexa Mini LF, Arri Alexa Mini, Arri Alexa 35, Sony VENICE, Sony VENICE 2
- Video Transmitters: Teradek Bolt 6, Teradek Bolt 4K, Teradek 3000XT, Vaxis Storm 3000, DJI Transmission
- Recording Devices: Ovide Smart Assist Evo 4, Sound Devices PIX-E7, PIX 240i, Convergent Design Odyssey 7Q, Blackmagic Video Assist, DJI High Bright Monitor/Recorder, ScreenPort, Ovide Koko
- Monitors: SmallHD Cine 24, SmallHD Cine 18, SmallHD 1303, SmallHD 703, Sony PVM250
- Editing & Graphics Software: QTAKE, DaVinci Resolve, Final Cut X, Lightroom, Procreate
- Office Software: PC & Mac OS, Microsoft Word, Excel, PowerPoint, Final Draft, Apple Pages, Numbers, Keynote

EDUCATION & TRAINING

Australian Cinematographer's Society	2019
• 2nd Assistant Camera Course	
Certified Blackmagic DaVinci Resolve 101	2018
The Los Angeles Film School - Hollywood, CA	10/2008 - 10/2009
Associate of Science, Film	
• Concentration: Cinematography, Editing	
Santa Monica College - Santa Monica, CA	02/2005 - 06/2008
• General Film Studies	

MAURICE VY | QTAKE VIDEO-ASSIST OPERATOR

+61 422 012 183 • mauvy@mac.com • [IMDb](#) • [Freelancers Promotions](#)

LANGUAGES

English (Native)

Cantonese (Fluent)

REFEREES

John Brawley ACS

Kitty May Allwood

Keir Suggett

Director of Photography

1st Assistant Camera

1st Assistant Camera

john@johnbrawley.com

kittymayallwood@gmail.com

keir@keirsuggett.com