



VIDEO ASSIST MELBOURNE



POWERED BY QTAKE, THE VIDEO ASSIST INDUSTRY STANDARD SOFTWARE AND SMART ASSIST HARDWEAR.

QTAKE HD is an advanced software application designed and developed for video assist professionals. It is the preferred tool of the most wanted video operators around the globe and it is updated on a monthly basis using valuable input from real production environment to bring you the best in Digital Video Assist.

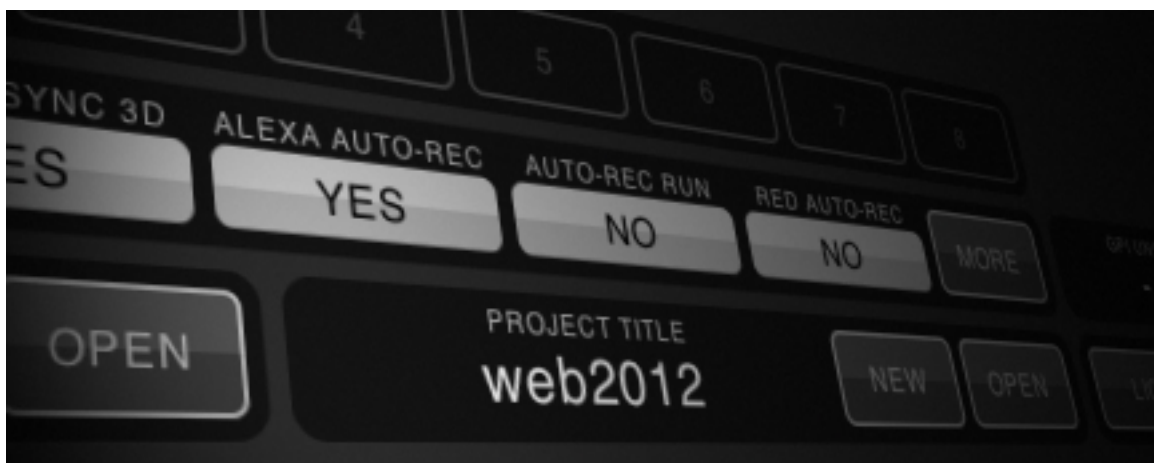
This powerful system integrates every aspect of modern video assist into the single solution:





INSTANT RECORD & PLAYBACK

After each recording, QTAK HD can automatically switch from LIVE to DISK mode, making your shot review just a click away. Insert markers and chapters during recording and use multiple in/out points for series of takes!



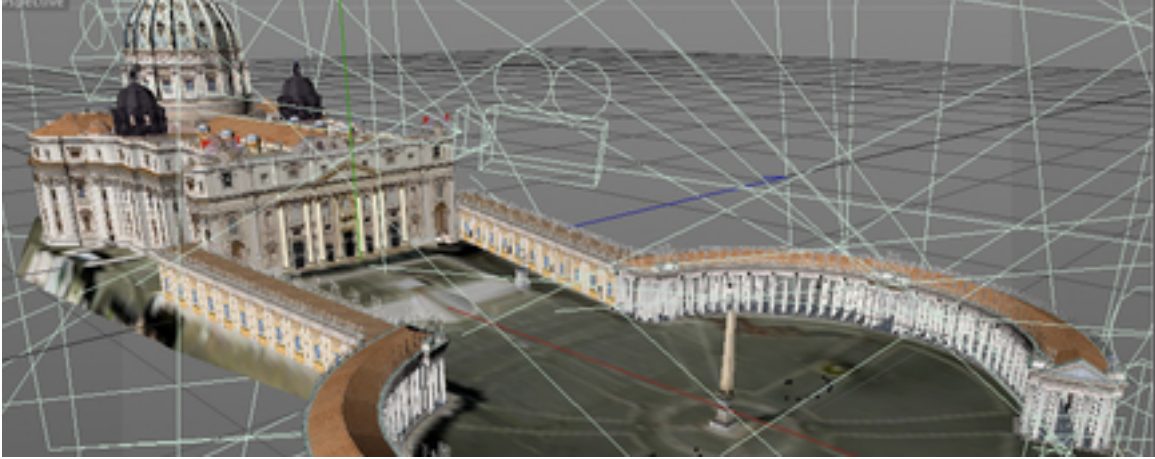
AUTO RECORD

Auto Recording for RED One, Epic, Scarlet and ARRI Alexa using special flags embedded into SDI stream. For all other digital cameras QTAK provides auto recording based on rec run timecode. You won't miss any more takes!



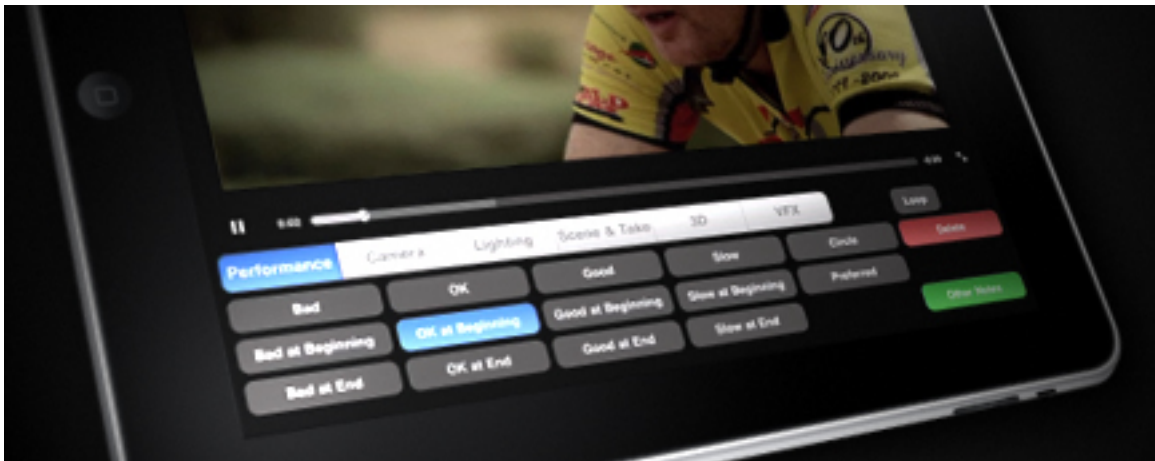
METADATA

Smart Assist is a Cooke /i Technology partner. Using this and other technologies we can gather lots of information from the camera and lenses just using the regular SDI video cable. We can read and store the filename, white balance, shutter, ISO, internal ND filter, rec trigger, lens' focus/iris/zoom...



CGI

Probably one of the most impressive features: Import 3D scene (eg. Collada files) and QTake will render it in realtime. You can either freely position virtual camera to match video or use MoCo camera to make it follow external positioning data. Using this module, QTake can read data from motion control systems and apply the same camera movement to 3D scene.



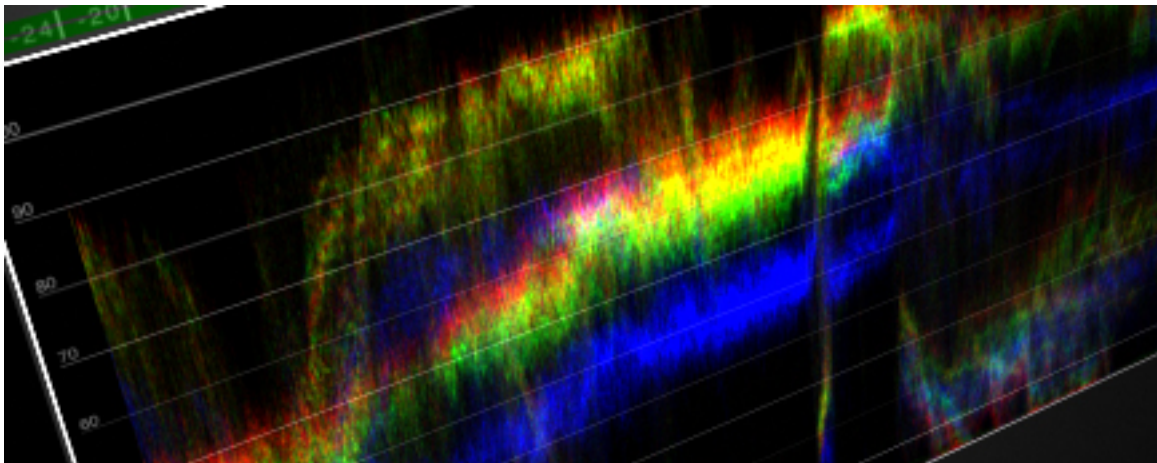
H264 PROXY CLIPS

While recording original signal, QTAKE HD can simultaneously record processed frames to create streamable dailies.



OFF-SPEED AND RAMPS

In addition to standard playback controls, you can playback clips with variable speed or create customizable ramps. Add multiple keyframes with speed control to create ramps instantly without rendering.



SCOPES & FALSE COLOR

Using SCOPES Module, you can analyze live or playback image using realtime Waveform, Vectorscope and Histogram tools. In addition, this module provides adjustable False Color mode for analyzing image exposure.



EXTENSIVE USER DATABASE

Shot logging is the essential part of professional video assist. QTAKE HD can store standard scene data as well as extended meta-data like camera settings and various shot notes. And you can enter every field before, during or after recording.



CAPTURE CODECS

Choose the codec that fits your postproduction workflow or just make your selection based on quality/space requirement ratio. QTAKE HD supports all flavors of Apple ProRes, Apple Intermediate, DVCPRO HD and Uncompressed movie codecs.

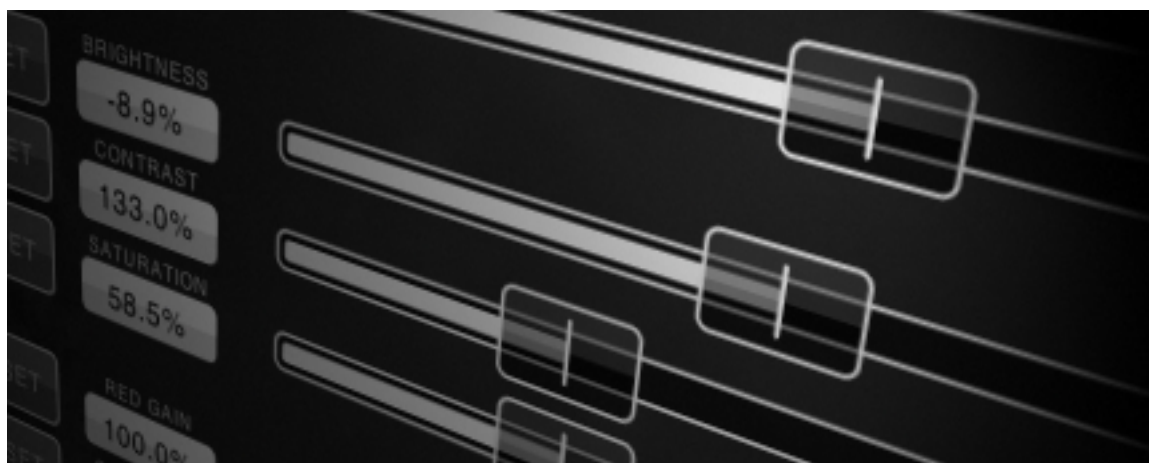
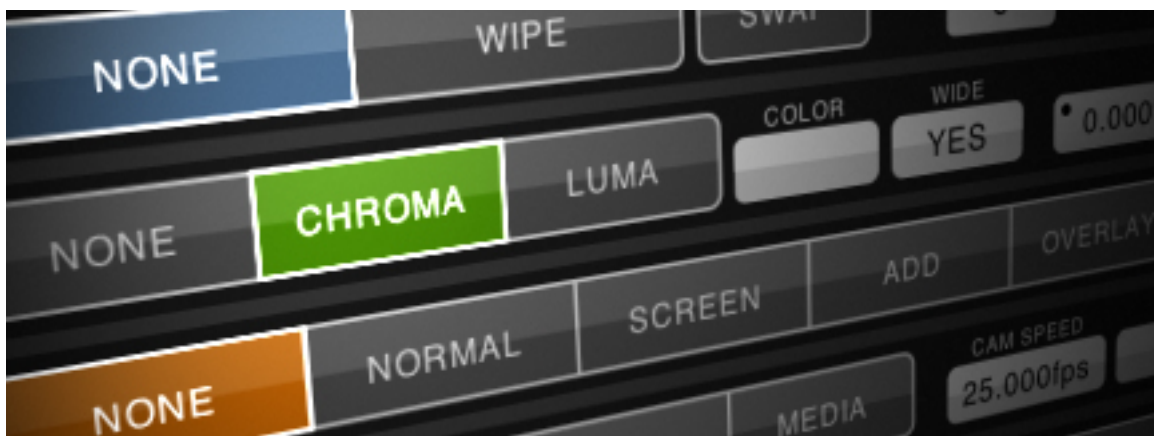


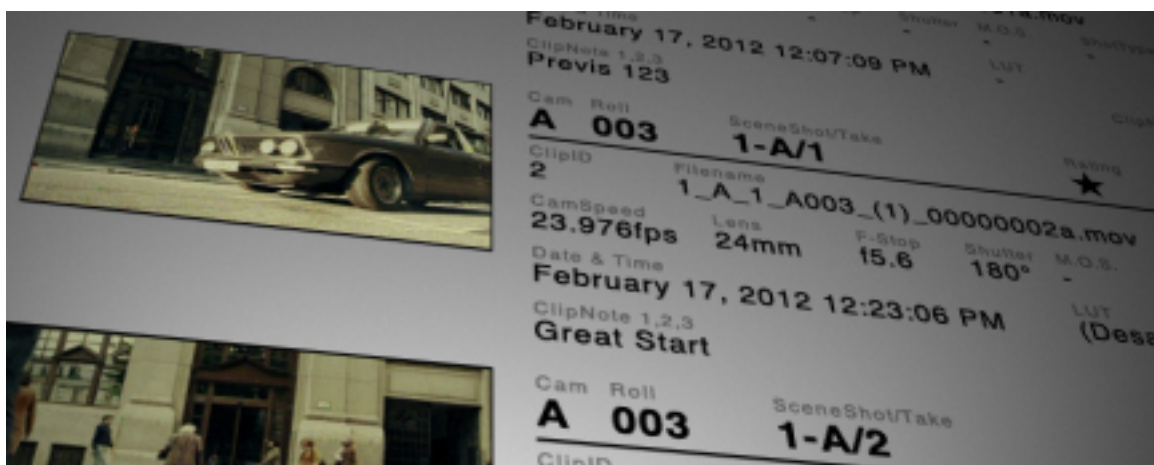
IMAGE PROCESSING

Forget the hardware boxes for picture adjustments. Now you can move, scale and rotate your image, apply color correction and display format mask – both for live signal and playback. No need for hardware mixers – create live composites inside QTAKE HD.



REALTIME COMPOSITE

With QTAKE HD you can prepare the vfx shots with ease. Create realtime 2 layer composite with various blend-modes, blue/greenscreen keying or wipe transition. You can use any two sources for overlay, live or disk.



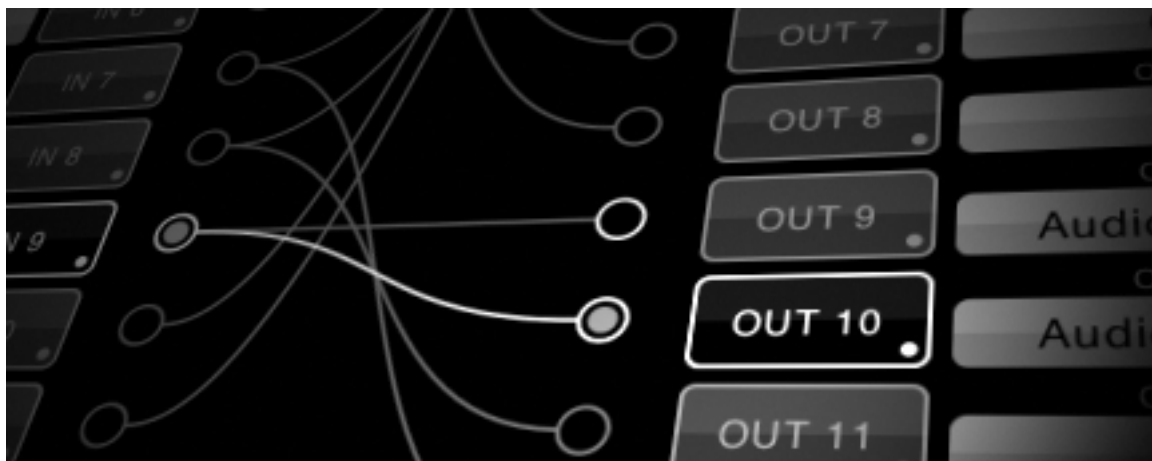
PDF REPORT

Export shooting reports with thumbnails and metadata to PDF documents. Reports will include every important piece of meta-data associated with media. Filter clip selection by shooting day, scene and other clip properties.



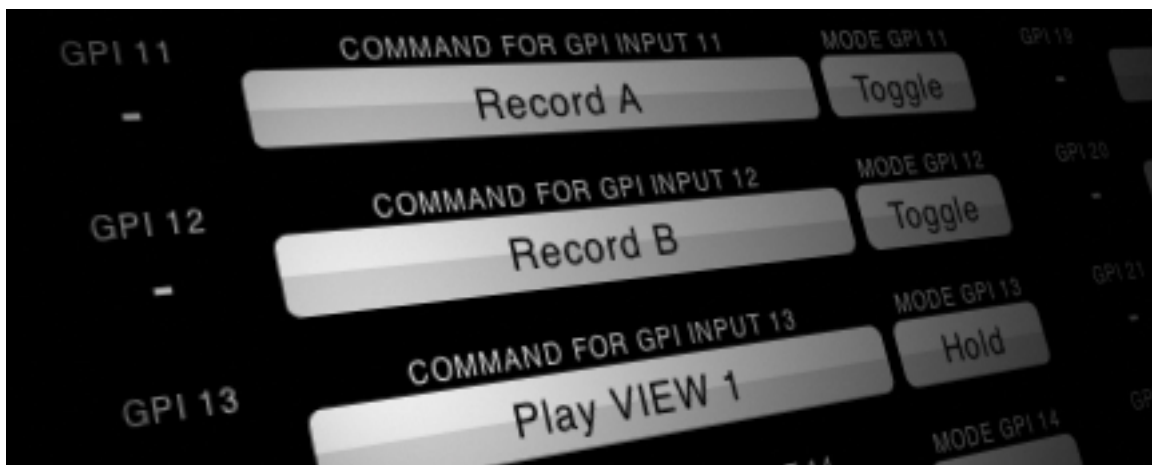
NETWORK LINK

QTAKE HD can control 8 systems for simultaneous capture and playback of up to 18 cameras or 9 stereoscopic 3D rigs. You can use wired or wireless network to easily connect QTAKE slave machines.



VIDEOHUB CONTROL

Control BMD Videohub using unique visual interface directly from QTAKE HD. Create pairs for stereo routing or lock individual routes. You can create up to 10 presets to instantly switch 16 routes.



GPI TRIGGERING

You can trigger background playback and at the same time record a new clip, while monitoring live composite. Or use frame-by-frame recording triggered by motion-control rig to shoot scale-model shots.



REMOTE CONTROL

We have implemented UDP based remote control protocol to allow integration with 3rd party systems. This protocol is used in QTAKE 3D Control iOS application used by stereographers to remotely pull post-convergence on parallel 3d rig shots. QTAKE 3D Control is now available on App Store



QTAKE MONITOR

Turns any iOS device into wireless on-set monitor with a very low latency of just 1.5 frames. In addition to dual camera monitoring, one QTAKE Monitor device can use TALKBACK feature to communicate with QTAKE Operator. Read more... QTAKE Monitor is now available on App Store



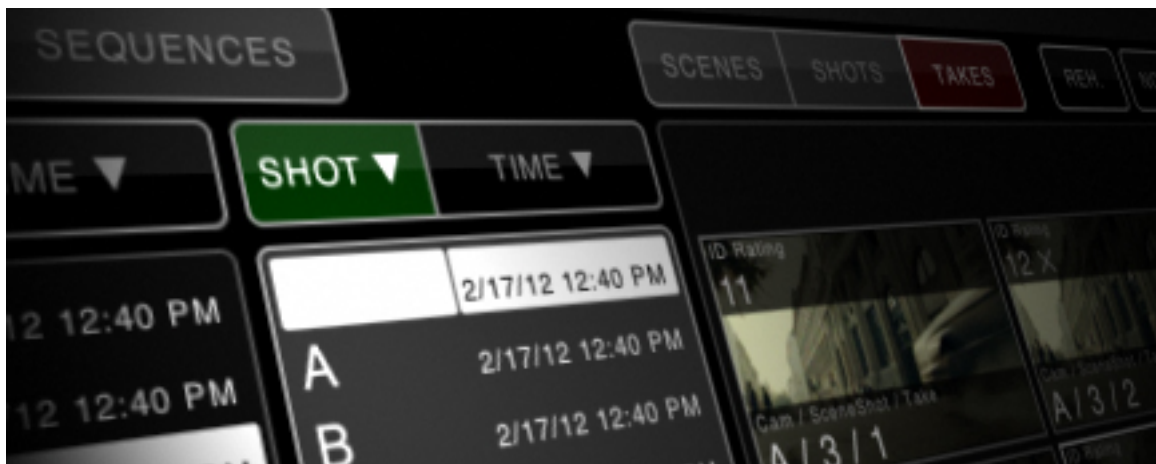
CONTROL SURFACE

QTAKE HD supports Avid (former Euphonix) Artist Series and Tangent Element Control Surfaces. Each panel can be customized to control your favorite functions.



3D RIG SUPPORT

QTAKE HD can read and store 3D meta-data UDP feed from 3ality Technica SIP Box. Using OSD feature you can display video output with rig data burn-in for live image and playback.



VISUAL SHOT BROWSER

QTAKE HD has the most intuitive clip browser to help you find the right take in a second. It uses the combination of tree-based view and thumbnails to achieve this. You can filter clips by rating to reveal only the director's favorite ones.

VIDEO ASSIST ALL IN ONE

OVIDE
SMART ASSIST



STREAM MONITOR



Take HD