

RAYNER COOK

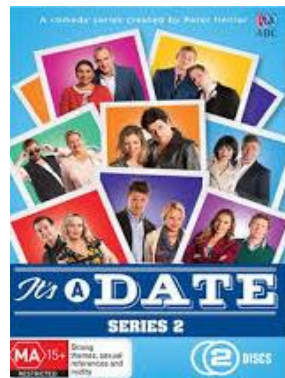
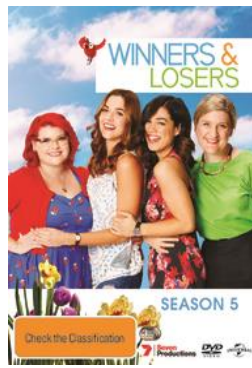
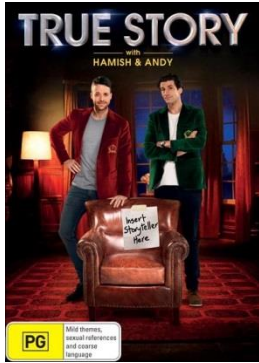
CAMERA DEPARTMENT

MOBILE: 0466 663 501

EMAIL: raynercook@gmail.com

WEB: www.raynercook.com

Agent: Freelancers Promotions



1st Assistant Camera - Drama

Year	Production	Company	Position	Format	DOP
2018	True Story Series 2	Radio Karate	A-Cam	Arri Alexa Mini / Amira	Matthew 'Wolf' Temple
2017	Phenomenom	Edible Adventures	A-Cam	Canon C300 MK2	Joanne Donahoe-Beckwith
2017	The Wrong Girl Series 2	Playmaker Media	B-Cam	Arri Alexa Plus	DP: Nic Owens B-Cam: Cara Hurley
2017	The Ex PM Series 2	CJZ	A-Cam	Arri Amira	Jaems Grant ACS
2016	The Edge of the Bush	Guesswork Television	A-Cam	Arri Alexa	DP: Matthew 'Wolf' Temple B-cam: James Todd
2016	Please Like Me	Pigeon Fancier Productions	B-Cam	Arri Alexa	DP: Matthew 'Wolf' Temple
2016	The Wrong Girl	Playmaker	Steady-cam	Arri Alexa Mini / Amira	B-cam / Steadicam: James Todd
2016	Little Acorns – web series	Guilty	B-Cam	Sony FS-7	DP: Simon Chapman
2016	Bruce – web series	Guilty	A-Cam	Arri Alexa Mini	B-cam / Steadicam: James Todd
2015	Barracuda	Matchbox Pictures	A-Cam	Arri Alexa Mini	Marin Johnson
2015	Winners & Losers Series 5	Channel 7	B-Cam	Arri Alexa Mini	DP: Stefan Duscio B-cam: Shelley Farthing-Dawe
2015	It's A Date Series 2	Princess Pictures	B-Cam	Arri Alexa+	DP: Phillip Cross ACS B-cam: Paul Hughes
2014	House Husbands	Playmaker SPV	A-Cam	Canon C300	Joanne Donahoe-Beckwith
2014	House Husbands	Playmaker SPV	Additional	Arri Alexa	Nick Owens
2013	House Husbands	Playmaker SPV	Additional	Arri Alexa	Nick Owens
2012	Mr & Mrs Murder	Fremantle Media	Additional	Arri Alexa	Darrell Martin
2012	Better Man	Fremantle Media	Additional	Arri Alexa	Peter Holland
2012	Mrs. Biggs	February Films	Additional	Arri Alexa	Fabian Wagner
2012-2007	Shortland Street Seasons 15 – 20	South Pacific Pictures	A-Cam	Sony 1500 / Sony 3700	Drew Sturge / Chris Matthews

1st Assistant Camera - Feature Film

2017	That's not my dog		B-Cam	Arri Mini	Roger Lanser / Tim Smart
2015	Spin Out	Stella Rose	2 nd Unit	Arri Alexa	Justin Brickle / Tim Smart
2015	That's Not Me	Storey Kids	A-Cam	Arri Mini	Shelley Farthing-Dawe
2012	Patrick	Roget Clinic	2 nd Unit	Arri Alexa - Anamorphic	Darrin Keough

1st Assistant Camera - Commercials

Commercials experience: Present - 2009

Cinematographers I have worked with: Joel Betts, Liam Gilmour, Shelley Farthing-Dawe, Ed Goldner, Jeremy Rouse, Earle Dresner, Martin Smith, Peter Eastgate, Wayner Aistrope, Riley Brown, Alex Serafini, Warwick Wrigley.

Camera Formats: Arri Alexa Classic, Arri Alexa SXT, Arri Alexa Plus, Arri Mini, RED Epic, RED One, Photron Hi-Speed, Weiss Hi-Speed, Sony F3, Sony F5, Sony F55, Canon C300, Canon C500

Production companies I have worked for: Airbag Productions, The Sweet Shop, EXIT, Guilty, Fiction, C-KOL, Chocolate, The Pound, 9mm (Channel 9), Cherry Pictures, Interrogate, Foxtel, Now We Collide, Plot Media, Film HQ, Sceneon, Nice Bike, Betty Wants In, Radium Films, C4 Camera

Selection of top commercials:

<i>"Mazda – Mazda 2 and CX3"</i>	Cherry Pictures	<i>"OPSM"</i>	EXIT Films
<i>"Swisse"</i>	Airbag Productions	<i>"Federation Uni"</i>	Sceneon
<i>"Virgin Australia"</i>	Interrogate	<i>"TAC"</i>	Sceneon
<i>"Lifestyle – RCA Subaru"</i>	Foxtel	<i>"2XU"</i>	Betty Wants In
<i>"NAB Bank"</i>	Now We Collide	<i>"Melbourne Museum"</i>	C-KOL
<i>"TAC"</i>	The Sweet Shop	<i>"Diamond Coat"</i>	Chocolate
<i>"BUPA"</i>	Fiction	<i>"Asus"</i>	The Pound
<i>"Medibank"</i>	Guilty	<i>"Holden"</i>	Fiction
<i>"Host Plus"</i>	EXIT Films	<i>"Cricket AUS"</i>	Guilty
<i>"Country Road"</i>	C-KOL	<i>"Devondale"</i>	EXIT Films
<i>"Lean Cuisine"</i>	9mm	<i>"Ford Focus"</i>	9mm

1st Assistant Camera – Music Videos

Year	Production	Company	Format	DOP
2015	Kate Martin – Set My Life To Fire	Oh Yeah Wow	Arri Alexa	Thom Neal
2015	Nervo – Let It Go	Frank Meets Wolf	Arri Alexa	Shelley Farthing-Dawe

1st Assistant Camera – Doco / Reality / Broadcast

2015	Secret Life Of Animals (Doco)	Blink Films UK	Sony F5	Phil Stebbing
2013	My Kitchen Rules	Channel 7	(Additional) XDCAM	Tim Hawkins
2013	House Rules	Channel 7	(Additional) XDCAM / Steadi-cam	Op: Steve Cahill
2013	The Mole	Fremantle Media	Sony XDCAM	Steve Davis
2012	The Impossible Orchestra	Hub Productions	Sony PDW-700 / Sony EX3	Ben Doudney
2012	F1 – Lenny Kravitz	Gear Head	Sony F3	David Knight ACS

Camera Operator - Drama

Year	Production	Company	Format	DOP
2017	Neighbours (Studio Additional)	Fremantle Media	Ped / Sony Studio / Box lens	TD
2015	Denise (TV pilot)	Seven Network	Arri Alexa	Phil Cross
2012	Shortland Street Season 20	South Pacific Pictures	Sony 1500 / Sony 3700 / Canon 7D MkII / Sony EX3	Drew Sturge
2011	Shortland Street Season 19	South Pacific Pictures	As above	Drew Sturge
2010	Shortland Street Season 18	South Pacific Pictures	As above	Drew Sturge
2009	Shortland Street Season 17	South Pacific Pictures	As above	Drew Sturge
2008	Shortland Street Season 16	South Pacific Pictures	Sony 1500	Chris Matthews

Camera Operator – Sport / Live OB

2018-2013	Australian Open	Tennis Australia	Hitachi	Live Broadcast
2018-2013	Speed Week and live broadcast	AVE	XDCAM	Motorsport / Sport
2012	Gary Chaw Live	MediaTec	Sony DXC D55	Concert

Camera Operator - Documentary

2015	Secret Life Of Animals	Blink Films UK	Sony F5	Phil Stebbing
2008	Kingi Tuheitia	Matariki Prod.	Sony EX1	
2007	Talbot Park	Housing NZ	Sony Z1P	

Camera Operator – Music Videos

2011	Stripped Down – Live sessions	Independent	Canon 5D MkII	George Platt
2008	Dirty Paradise	Independent	Sony EX1	Chris Matthews
2007	Sonic Alter	Independent	Sony EX1	

Camera Operator – Short Film

2012	Fighting Chance	Bioscope Films	Canon 5D MkII	Rayner Cook
------	------------------------	----------------	---------------	-------------

Visual Effects - Drama

On set Visual Effects Assistant – Feature Film

Year	Production	Company	Role	Format	Supervisor
2012	The Great Gatsby	Bazmark Films Animal Logic Warner Brothers	(Pick-up unit)	RED Epic 3ALITY 3D	VFX Sup: Chris Godfrey
2012	I, Frankenstein	Lakeshore Entertainment	(Additional)	RED Epic	VFX Sup: James McQuaide

Rotoscope / Basic comp artist – Feature Film

2014	Infini	Infini Movie Pty Ltd	2D Artist	Arri Alexa Software: NUKE	Producer: Mat Graham
------	---------------	----------------------	-----------	------------------------------	----------------------

Training – Visual Effects

2013 ROTOSCOPE TRAINING COURSE – Animal Logic Sydney

Trainer: Vaughn Arnup – Animal Logic roto department supervisor

- Nuke based rotoscope training held on site in Animal Logic’s training facility. The six week course covered extensive rotoscoping – 2D and stereoscopic (Manual as well as with trackers), basic compositing techniques, tracking, keying, 3D camera systems, patching and rig removal.

2012 TOTAL STATION SURVEY TRAINING – Total Measurement Solutions

Trainer: Andrew Borszcz – Total Measurement Solutions

- Essential skills of set surveying for point cloud creation, with practice and feedback undertaken whilst working on feature film ‘The Great Gatsby’.

Equipment

- Small HD 702 On-board Monitor
- Dana Dolly Camera Slider with 7ft track
- Miller DS-20 tripod
- Sigma 24-70mm f/2.8
- Wireless FIZ 3 motor remote focus
- Canon 5D Mark II
- Canon 50mm f/1.4
- Go Pro 3 Black kit
- Inclinometer
- Zoom H4N sound recorder

Vehicle and Passports

- Two Camera Truck - 2005 Toyota Hilux with truck body box (Includes camera and monitor trolleys / consumables / shelving / can plug into mains electricity)
- Victorian manual driver's license
- Australian and Dutch passports

Skills

- Ten years camera assistant experience
- Experienced pulling focus for Steadicam and handheld operating
- Pedestal multi camera studio and location camera operating
- Drama Lighting
- Rotoscoping and basic comp with Nuke
- Understanding of Visual effects workflows
- VFX on set surveying for point cloud creation
- Editing
- Flash Animation
- Photography

Education and Professional Development

- Diploma in Film and Television Production – South Seas Film and Television School (2006)
- Certificate in Film Camera Assisting – South Seas Film and Television School (2006)
- Modern Cinematography – AFTRS Open short course (2015)
- Rotoscope training course – Animal Logic (2013)
- Total Station survey training – Total Measurement Solutions (2012)
- Visual effects and digital augmentation short course – Filmmaking Summer school (2013)
- Flash Animation - Short course – South Seas Film and Television School (2007)

Referees

Referee contact details and additional referees available on request

Matthew 'Wolf' Temple
Cinematographer

Simon Chapman
Cinematographer

James Todd
Steadicam / Camera operator

Andrew Jerram
Focus Puller